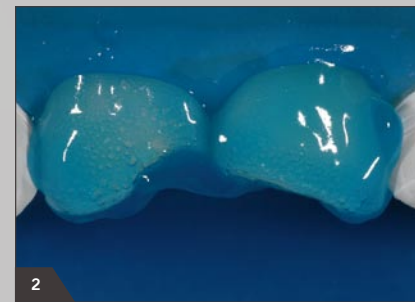


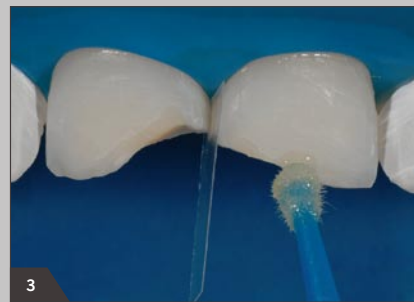
Restoration of a class IV cavity



1 Initial situation: incisal fracture in teeth 11 and 21



2 Conditioning the tooth substance with 37 % phosphoric acid



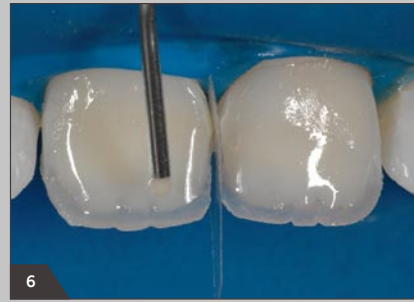
3 Application of the adhesive



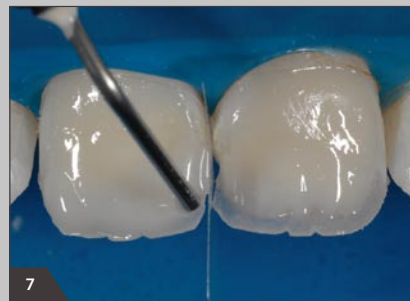
4 Application of Amaris TL to reconstruct the palatal enamel portion



5 Modelling the dentine and mamelons with Amaris O1



6 Creating mamelons with a natural appearance through light pigmentation with Amaris Flow HO



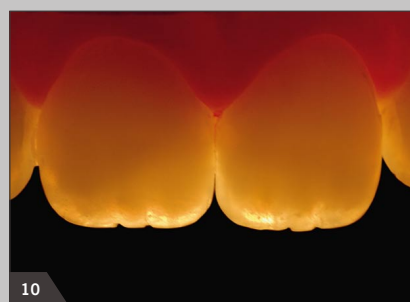
7 Forming the incisal edges with the highly translucent Amaris Flow HT



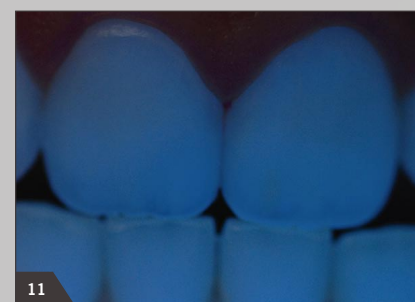
8 High gloss polish of the restoration



9 Completed anterior restoration



10 Natural opalescence and translucency of the restorations



11 Fluorescence like with natural teeth



12 Anterior restorations indistinguishable from the natural teeth

Source: Dr. Sânzio Marques - Passos, Brasil



Presentation

REF 1930

Amaris® Set
set 8 x 4 g syringes (O1, O2, O3, O4, O5, TL, TN, TD), 2 x 1.8 g syringes Amaris® Flow (HT, HO), accessories

REF 1931

Amaris® Set SingleDose
8 x 4 g syringes (O1, O2, O3, O4, O5, TL, TN, TD), 2 x 1.8 g syringes Amaris® Flow (HT, HO) + 50 Futurabond NR SingleDose, accessories

REF 1949

Amaris® Caps Intro Set
4 x 0.25 g Caps (each O1, O2, O3, O4, O5, TL, TN, TD), 2 x 1.8 g syringes Amaris® Flow (HT, HO), accessories

REF 1950

Amaris® Caps Set
16 x 0.25 g Caps (each O1, O2, O3, O4, O5, TL, TN, TD), 2 x 1.8 g syringes Amaris® Flow (HT, HO), accessories

REF 1951

Amaris® Caps Set SingleDose
16 x 0.25 g Caps (each O1, O2, O3, O4, O5, TL, TN, TD), 2 x 1.8 g syringes Amaris® Flow (HT, HO) + 50 Futurabond NR SingleDose, accessories

Amaris Gingiva

REF 1970

Amaris® Gingiva Set
set 1 x 4 syringe base shade nature, 3 x 1.2 g syringe opaquer (white, light, dark), accessories

REF 1971

Refill
refill 1 x 4 syringe base shade nature

One 4 g syringe in the following shades:

Base shades (opaque)

- REF 1933 Amaris® Opaque, O1
- REF 1934 Amaris® Opaque, O2
- REF 1935 Amaris® Opaque, O3
- REF 1936 Amaris® Opaque, O4
- REF 1937 Amaris® Opaque, O5
- REF 1938 Amaris® O Bleach, OB

Enamel shades (translucent)

- REF 1940 Amaris® Translucent light, TL
- REF 1941 Amaris® Translucent neutral, TN
- REF 1942 Amaris® Translucent dark, TD

16 x 0.25 g Caps in the following shades:

Base shades (opaque)

- REF 1953 Amaris® Opaque, O1
- REF 1954 Amaris® Opaque, O2
- REF 1955 Amaris® Opaque, O3
- REF 1956 Amaris® Opaque, O4
- REF 1957 Amaris® Opaque, O5
- REF 1958 Amaris® O Bleach, OB

Enamel shades (translucent)

- REF 1960 Amaris® Translucent light, TL
- REF 1961 Amaris® Translucent neutral, TN
- REF 1962 Amaris® Translucent dark, TD

2 x 1.8 g syringe in the following shades:

Special shades

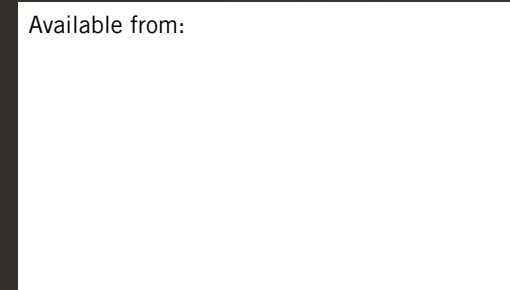
- REF 1945 Amaris® Flow, High translucent, HT
- REF 1946 Amaris® Flow, High opaque, HO

VOCO GmbH
P.O. Box 767
27457 Cuxhaven
Germany

Tel.: +49 (0) 4721-719-0
Fax: +49 (0) 4721-719-140

info@voco.com
www.voco.com

Available from:



A M A R I S®

BEAUTY –
COMPOSE IT !

Amaris

NATURAL ELEGANCE

Two simple steps – layers like in nature – brilliant results

Easy to learn

For several decades dentists have used an industry standard designed to facilitate communication of shades from a chairside perception to the technician's workbench. According to this standard, dentists first select a matching shade, apply it and polish it, and then check whether it really matches the tooth. Changes at this point would require re-doing the entire restoration.

The **Amaris**® shade system invites to think differently: the shade impression is developed "as you go". Getting it right requires almost no experience – simply follow the instructions – and enjoy the results! Dentine shines through enamel – together they define the optical appearance of the tooth.

Amaris® offers a shade system which follows this natural principle and reduces aesthetic direct restoration to two simple steps.

The base shades O1 to O5 and OB

The opaque base shades cover the entire shade range of dentine. The dentist selects the matching base shade with the help of a shade guide, and applies and cures this material in the first restorative step in the dentine area. The base shade is also used to create mamelons.

The enamel shades TN, TL and TD

In the second step, the selected base shade is either confirmed or adjusted. If the base shade already matches the tooth shade, it is confirmed using the enamel shade TN (Translucent neutral). If the base

shade appears lighter than the tooth, it can be darkened using the enamel shade TD (translucent dark). If the base shade appears too dark, it can be lightened using the enamel shade TL (Translucent light).

The special shades HT and HO

For special effects **Amaris**® offers two flowable special shades. HT (High translucent) allows to create stunning visual depth and is ideal for very translucent incisal edges. HO (High opaque) is a flowable shade which allows to mask discolourations or to prevent the shining-through of the dark oral cavity.

Handling and polishing

The base and enamel shades have a non-sticky smooth consistency

Amaris

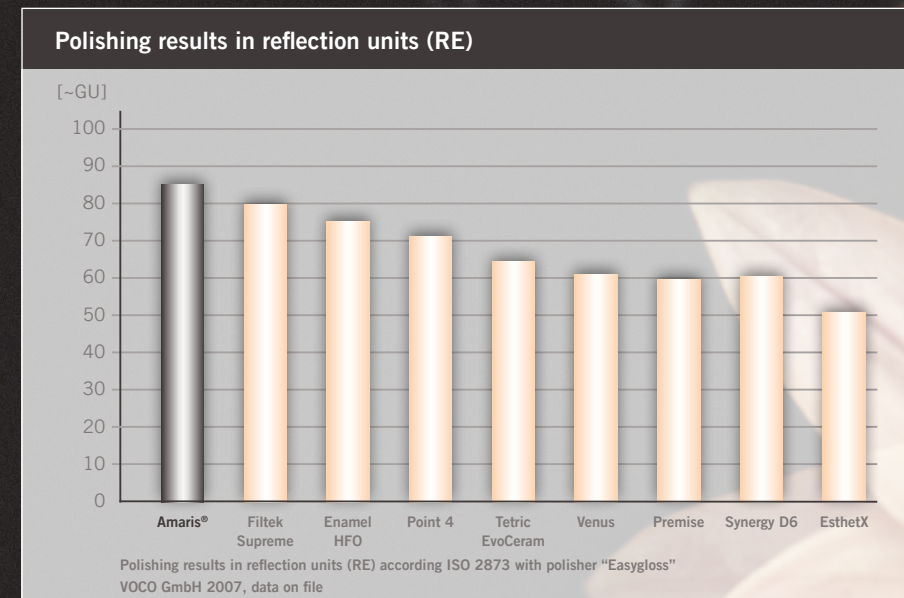
SIMPLY BEAUTIFUL

Indications

- Aesthetic restoration of Class III, IV and V cavities in anteriors
- Aesthetic restoration of Class I, II and V cavities in posteriors
- Reconstruction of traumatically damaged anteriors
- Direct and indirect composite veneers, facing of discoloured anteriors
- Correction of shape and shade for improved aesthetics
- Repair of highly aesthetic ceramic restorations, e.g. veneer repair
- Splinting, interlocking of teeth

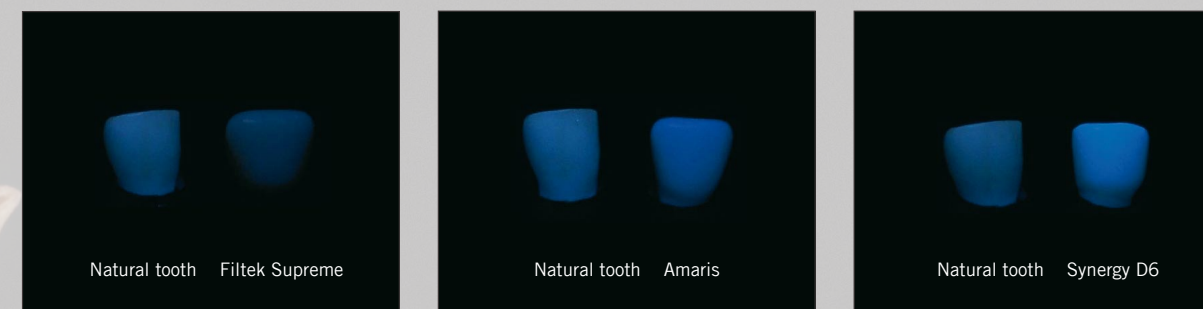
Advantages

- Two simple steps, perfect results
- Layering like in nature: shades are created from the inside of the tooth
- Easy to learn, fast aesthetic results
- Intuitive approach, no preconceived shades
- Non-sticky consistency is ideal for modelling and shaping
- Long resistance to ambient and chair light
- Optimal polishability
- Natural fluorescence and high colour stability
- Good chameleon effect for invisible restorations



Filltek Supreme, Enamel HFO, Point 4, Tetric EvoCeram, Venus, Premise, Synergy D6, EsthetX are not registered trademarks of VOCO GmbH

Natural fluorescence:



Only fluorescence that is comparable to natural tooth substance yields a visual depth effect which is perceived as brilliance and vitality

VOCO GmbH 2007, data on file

Amaris

BEAUTIFULLY SIMPLE

Restoration of a Class II cavity after fracture of an amalgam filling in tooth 45



1 Fractured occlusal distal amalgam filling in tooth 45



2 Placement of rubber dam and removal of remaining amalgam. Situation after complete excavation



3 Opaque dentine base layer applied in increments



4 Final layer with translucent enamel shade



5 Finished, polished restoration (vestibular view)



6 Finished restoration from occlusal view

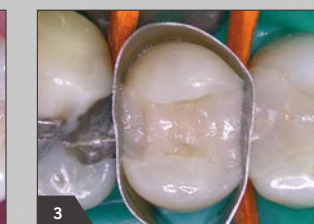
Replacement of a composite filling (Class II cavity) in tooth 35



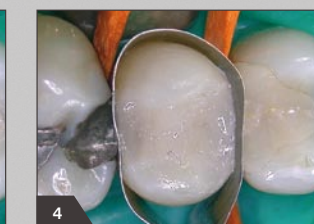
1 Insufficient mod composite restoration in tooth 35



2 Situation after removal of the filling and complete excavation



3 Incremental layers of opaque dentine base shade



4 Final layer with translucent enamel shade



5 Finished, polished restoration

Source:
Assistant Professor Andreas Braun, DMD
Felix Krause, DMD
Periodontology, Conservative and Preventive Dentistry Clinic,
Centre for Dental and Oral Medicine,
Rheinische Friedrich-Wilhelms University of Bonn, Welschnonnen St. 17,
53111 Bonn, Germany

